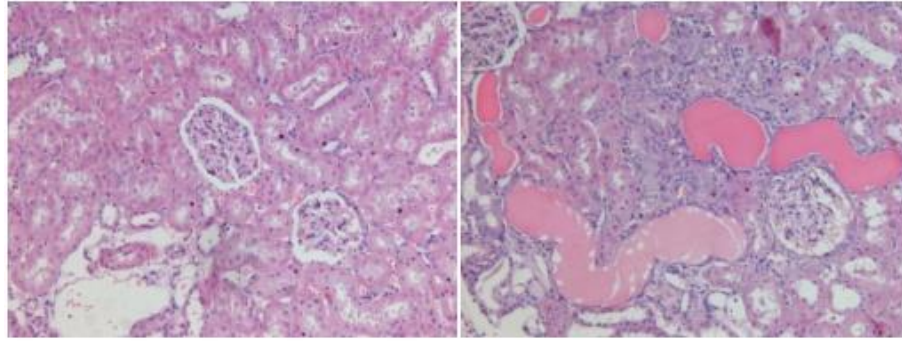
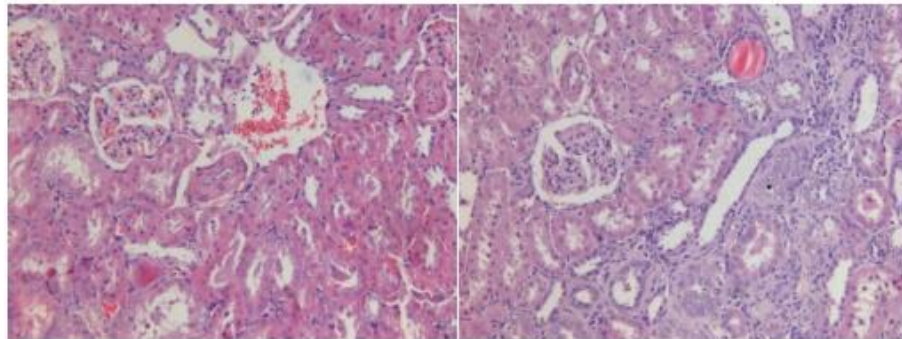

SUPPLEMENTARY DATA

Appendix A: DSS Rat Study Photomicrographs



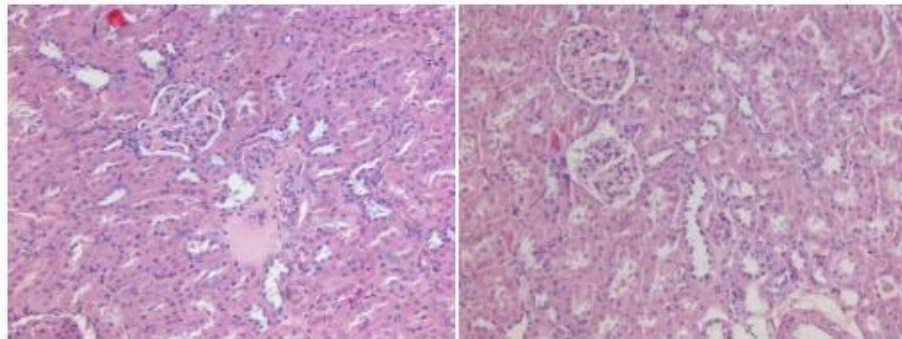
Control (NO.81)

Model (NO.83)



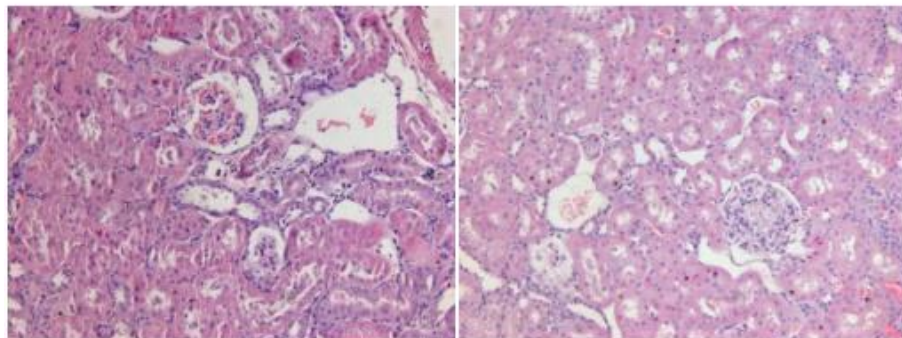
Excipient (NO.24)

Eplerenone (NO.5)



KBP-5074 L1 (NO.65)

KBP-5074 L2 (NO.1)



KBP-5074 Middle (NO.26)

KBP-5074 High (NO.76)

Figure 1. H&E stain (Kidney).

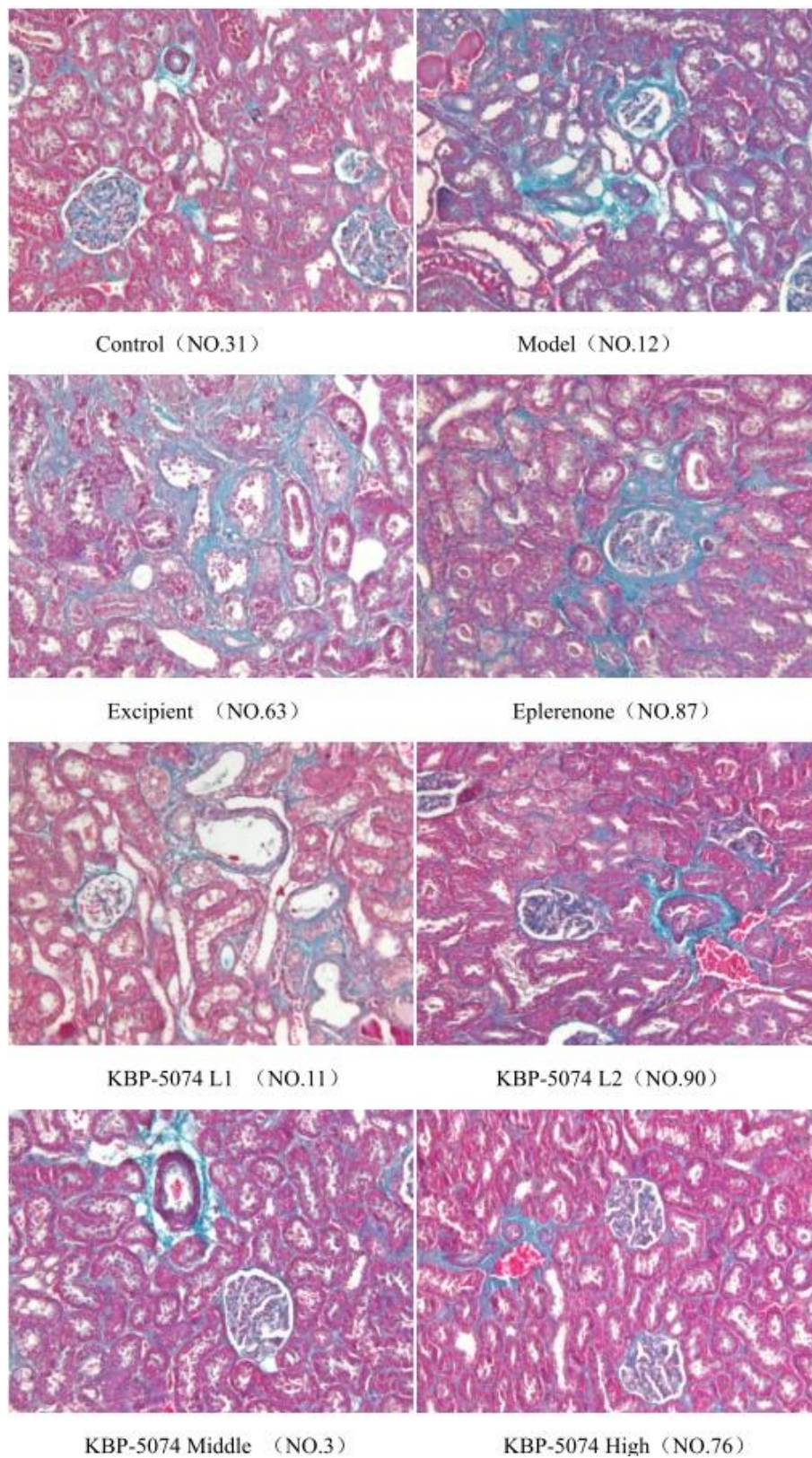


Figure 2. Masson stain (Kidney) for analysis of kidney fibrosis.

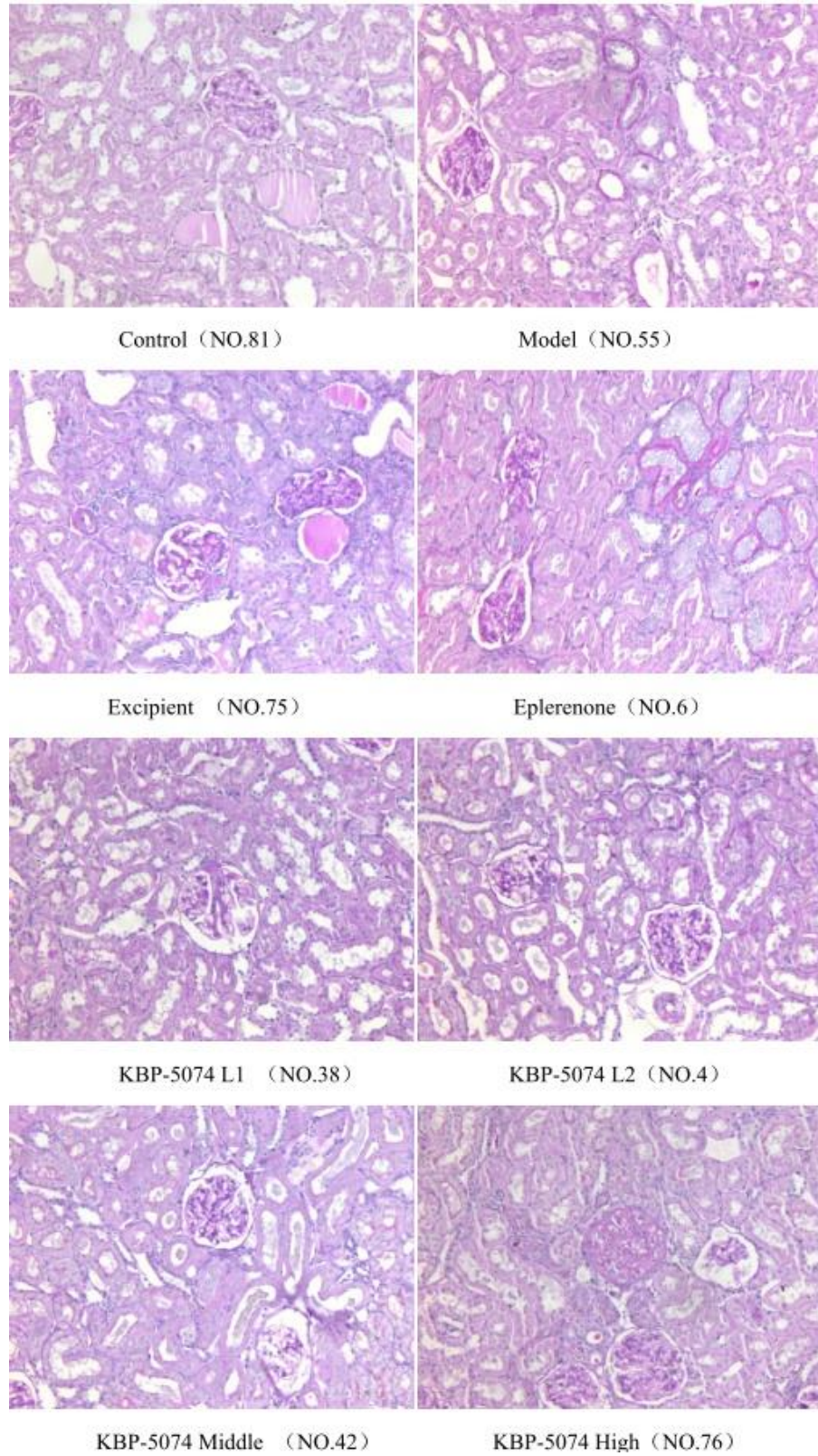


Figure 3. PAS stain (Kidney) for analysis of presence of glycogen.

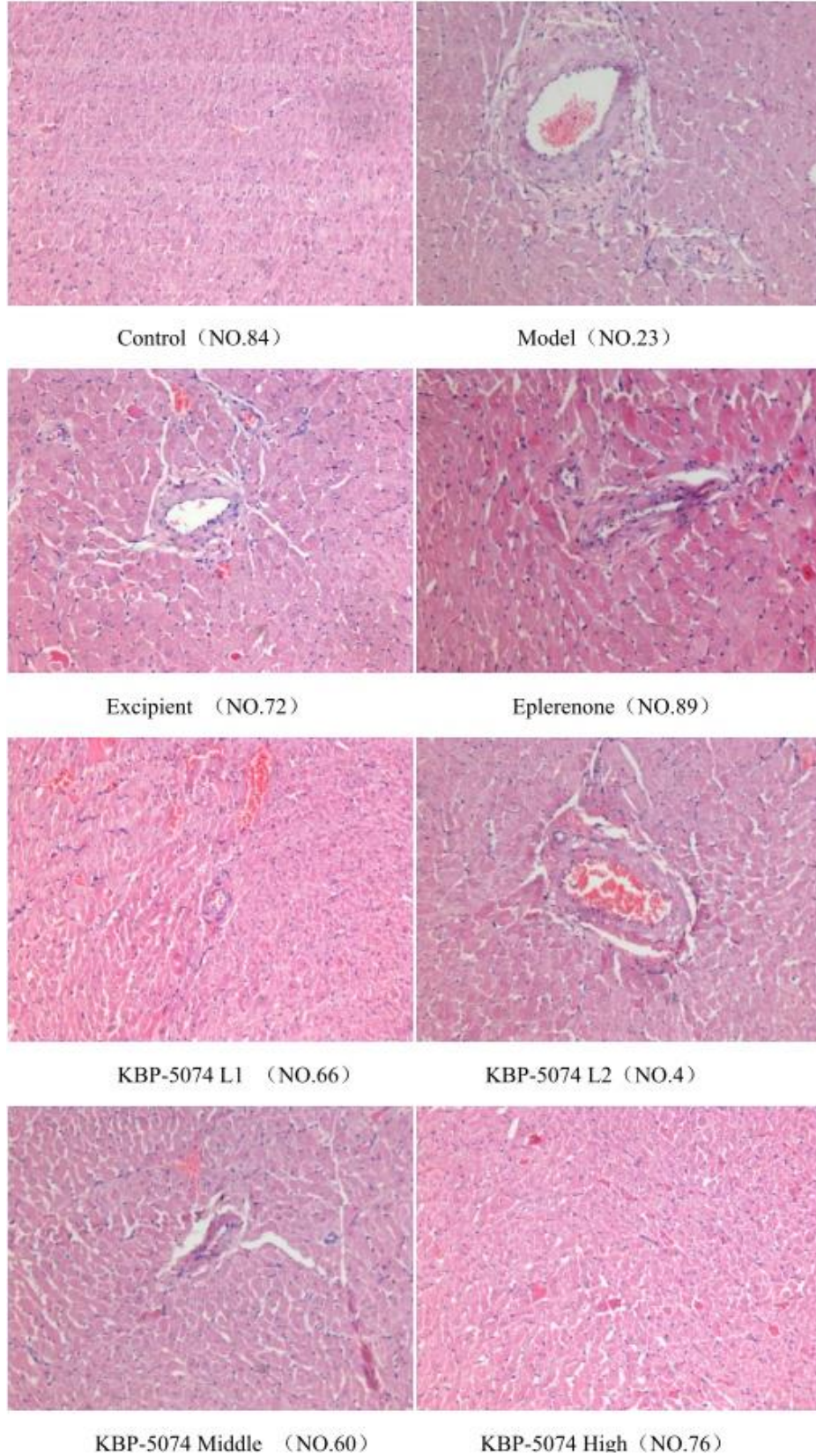


Figure 4. H&E stain (Heart).

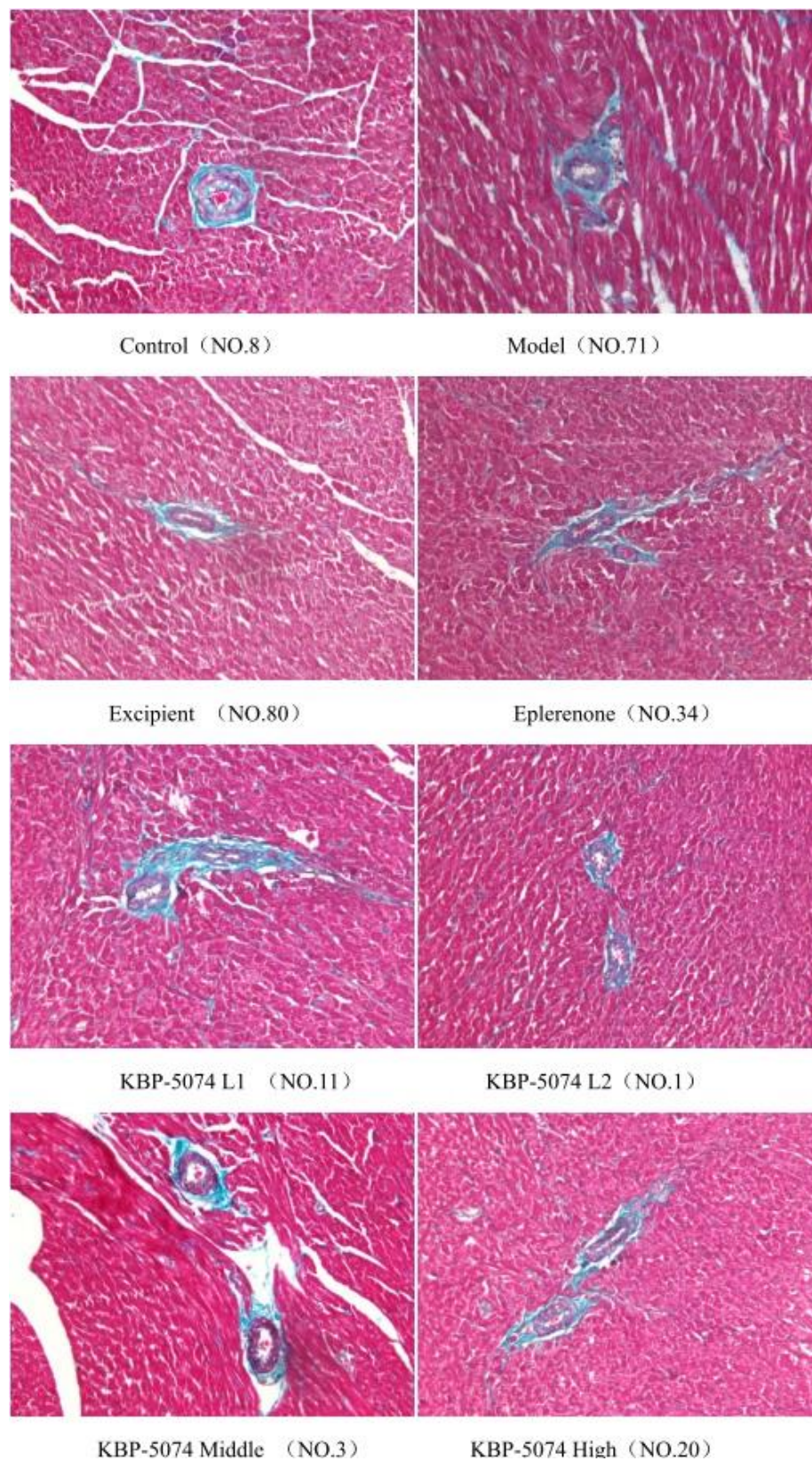


Figure 5. Masson stain (Heart) for analysis of fibrosis.

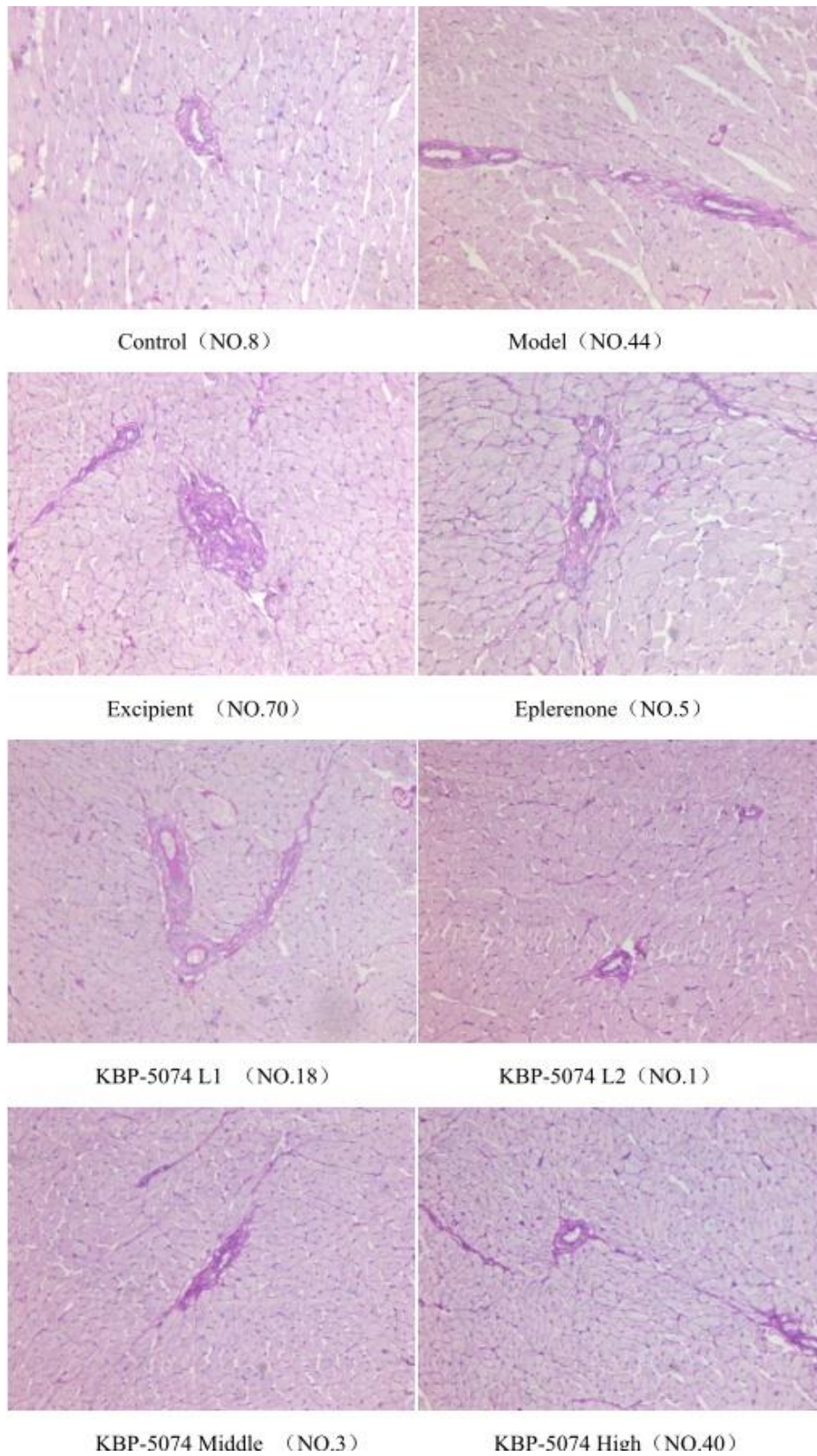


Figure 6. PAS stain (Heart) for analysis of presence of glycogen.

Appendix B: SHRSP Study Photomicrographs

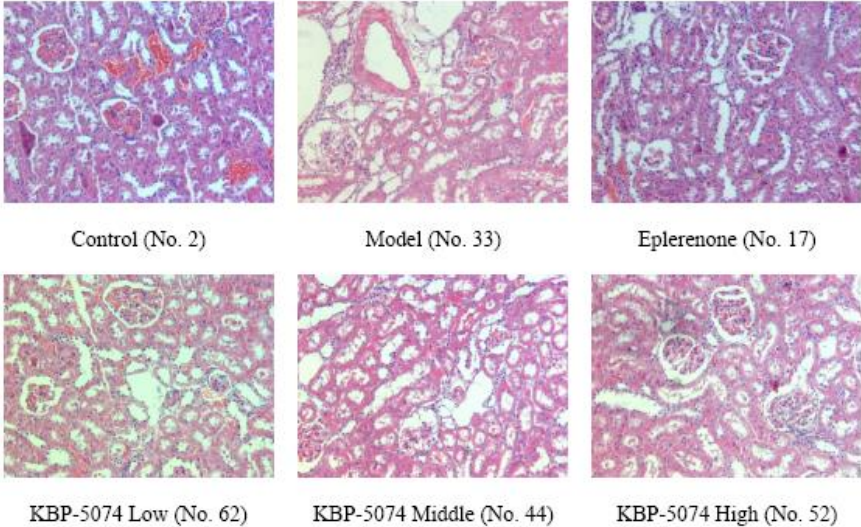


Figure 7. H&E stain (Kidney).

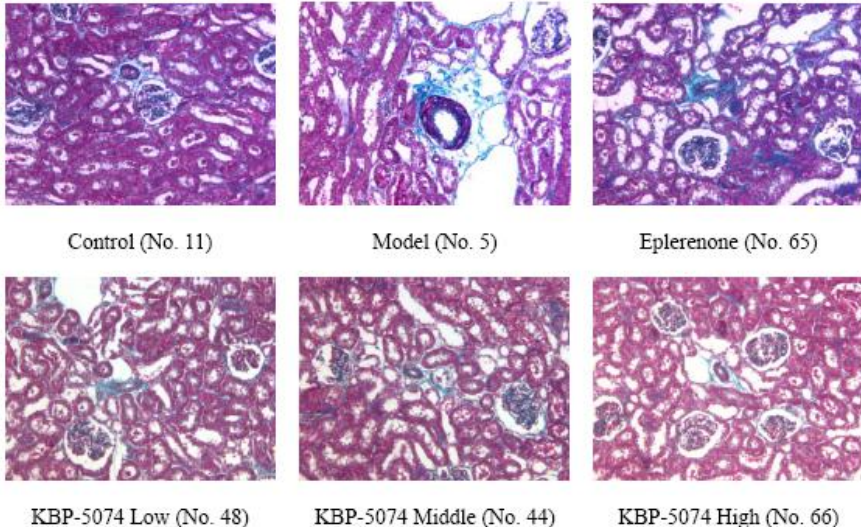


Figure 8. Masson stain (Kidney) for analysis of kidney fibrosis.

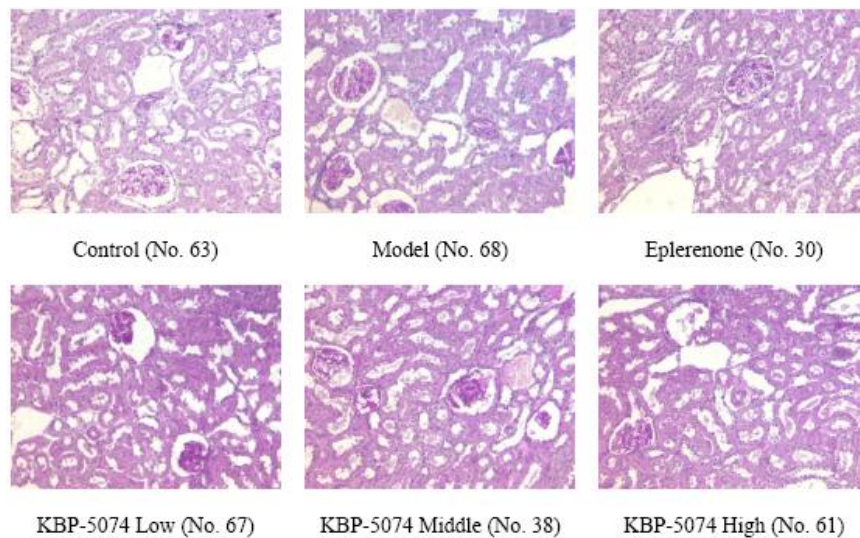


Figure 9. PAS stain (Kidney) for analysis of presence of glycogen.

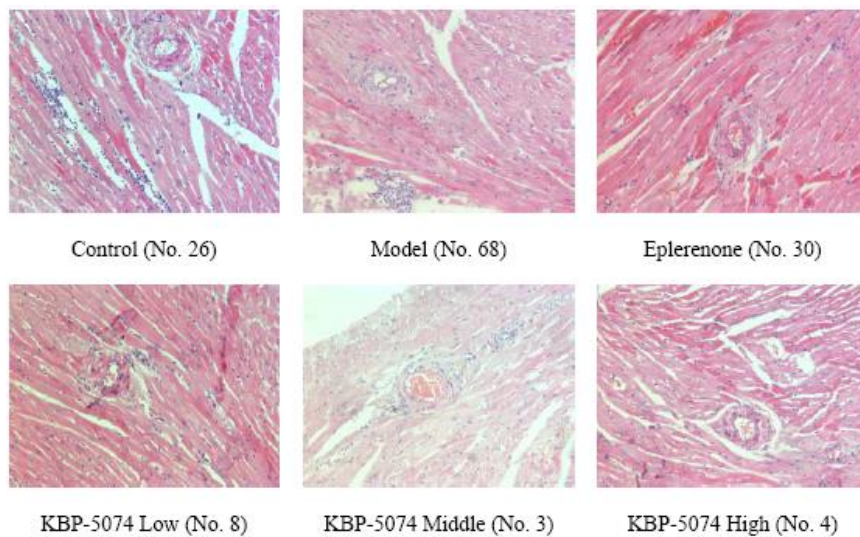


Figure 10. H&E stain (Heart).

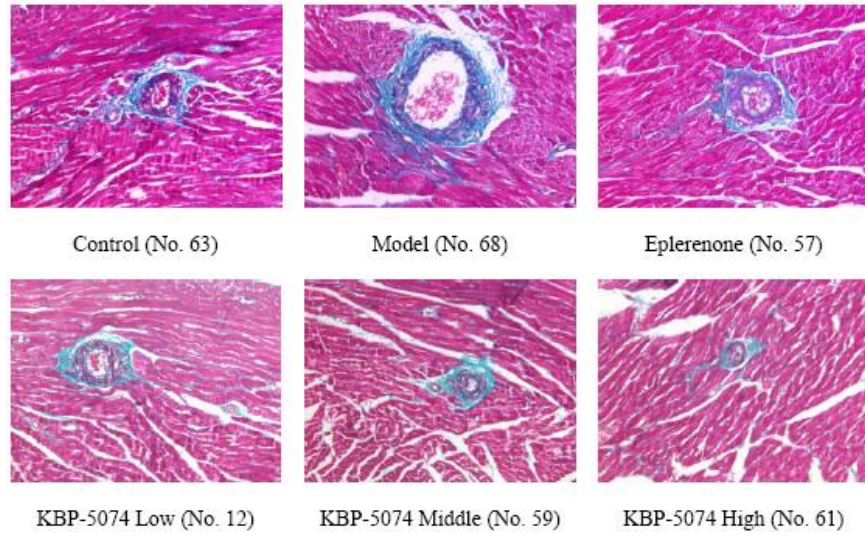


Figure 11. Masson stain (Heart) for analysis of fibrosis.

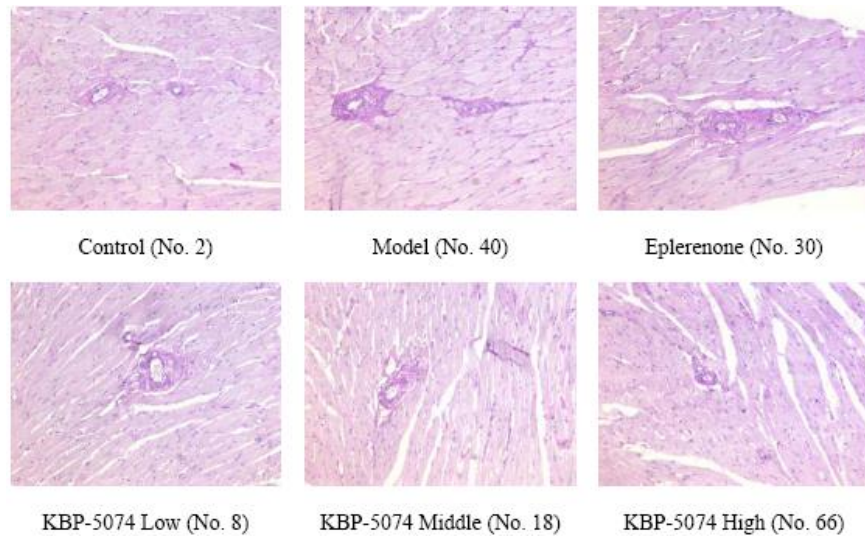


Figure 12. PAS stain (Heart) analysis of presence of glycogen.