

Electrical Impedance Tomography for Respiratory Monitoring During Alveolar Recruitment Maneuver

Antonio Romero*, Veronica Guillo, Angel Blanco, Alberto Gutierrez, Javier Garcia

Department of Anesthesiology, Resuscitation and Critical Care, Hospital Universitario Puerta de Hierro-Majadahonda, Spain

*Corresponding author: Antonio Romero Berrocal, Department of Anesthesiology, Resuscitation and Critical Care, Hospital Universitario Puerta de Hierro-Majadahonda, Spain, Tel:+34687403747; E-mail: antonromero@hotmail.com

Received date: 29 Apr 2016; Accepted date: 24 Sep 2016; Published date: 29 Sep 2016.

Citation: Romero A, Guillo V, Blanco A, Gutierrez A, Garcia J (2016) Electrical impedance tomography for respiratory monitoring during alveolar recruitment maneuver. J Clin Anesth Manag 1(4): doi <http://dx.doi.org/10.16966/2470-9956.117>

Copyright: © 2016 Romero A, et al. This is an open-access article distributed under the terms of the Creative Commons Attribution License, which permits unrestricted use, distribution, and reproduction in any medium, provided the original author and source are credited.

Abstract:

57 years old patient, with acute myocardial infarction that produces heart failure with an ejection fraction of the left ventricle of 20%, and hemodynamic instability where the implantation of a biventricular assistance was necessary. While entering suffered an impairment of respiratory function. Respirator ventilatory parameters were adjusted to prevent lung damage, low tidal volume (480 ml), respiratory rate of 13 and a level of positive end expiratory pressure of 8 cm H₂O. By monitoring pulmonary tidal volume distribution with Electrical Impedance Tomography, bedside, we note that the distribution of tidal volume was not homogeneous. Alveolar recruitment maneuver under the control of the SIT allowed to observe the distribution of tidal volume and which were necessary to ventilate the lungs homogeneously.

Keywords: Image; lung protection; electrical impedance; Bedside

Abbreviations: ARDS: Adult Respiratory Distress Syndrome; EIT: Electrical Impedance Tomography; VT: Tidal volume; PEEP: positive end expiratory pressure; ARM: Alveolar recruitment maneuver; CT: Computer Tomography; Pplat: Plateau Pressure, C_{dyn}: dynamic compliance; I: E: Inspiratory: Expiratory.

Introduction

One problem during hospitalization of patients is the impairment of respiratory function and hemodynamic instability. Before the onset of respiratory problems is difficult to transfer the patient to perform a chest CT because of their hemodynamic status. The lungs undergoing mechanical ventilation may have areas with atelectasis, which favors the distribution of VT is not homogeneous. This lack of homogeneity has been studied by computed tomography, magnetic resonance and isotope methods. However, these methods do not allow monitoring of mechanical ventilation bedside. EIT is used clinically for over ten years. It is free of radiation and has a high resolution, suitable for monitoring the volume distribution in the lung through the electrical impedance during each breathing cycle immediately helping us in selecting ventilator settings.

The more the air contains, lung tissue will be higher electrical resistance. To determine this impedance is incorporated around the patient's chest a belt with 16 electrodes that are distributed around the chest diameter. A pair of electrodes applied a very low current, and the other electrodes measure the respective resulting tensions that change the content of air in the chest. The application of current rotates around the chest, and thus also changing the measurement points of stress.

Case Presentation

Male patient, 57 years old, 80 kg of weight and 173 cm tall, with a history of diabetes mellitus and hypertension who suffers an acute myocardial infarction involving severe heart shape, left with impaired myocardial function with a fraction 20% ejection. This necessitated the implantation of a biventricular cardiac assistance. During the stay in the critical care unit the patient suffered a deterioration of respiratory function with impaired gas exchange. Respirator ventilatory parameters were adjusted to avoid lung distension in the mode BIPAP with maximum pressure of 21

cm H₂O and PEEP of 8, with resultant tidal volume of 480 ml, respiratory rate of 13 and an I / E 1 / 2. O₂ saturation was 93% and pO₂ was 73 mm Hg with FiO₂ 50%, with pCO₂ of 33 mmHg. The dynamic compliance was 38 ml / hPa. By monitoring pulmonary tidal volume distribution Electrical Impedance Tomography (EIT) (PulmoVista 500, Dräger), bedside, we note that most of the VT is not evenly distributed in the lungs. Most of the volume, 42% +29% (71%) for the right lung field and was distributed only 17% + 4% (21%) directed to the left lung. (Figure 1)

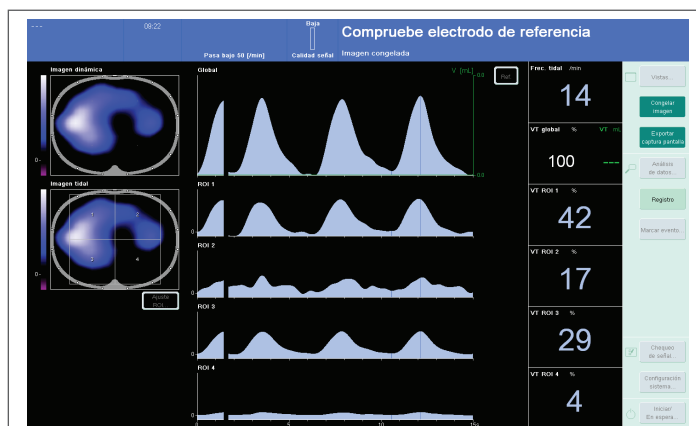


Figure 1: Image reference prior to Alveolar recruitment maneuver (ARM). To the left side of the image is observed the lung segment divided into four quadrants; 1 and 3 for the right lung field and 2 and 4 to left field. In blue color is represented normally ventilated area and in white possible alveolar distension. In the right column, the percentage of tidal volume distributed in each quadrant is observed and found that the left lung only reaches 21% (17% + 4%).

Alveolar recruitment maneuver (ARM) under monitoring with EIT allowed to observe the distribution of tidal volume and what was the alveolar opening pressure needed to maintain the lung open. So far no evidence has been found which is the best alveolar recruitment maneuver. AMR was used in the patient described in ART study, which maintains a continuous pressure gradient which appears to be a variable protective of lung damage in patients with respiratory distress syndrome, although there is no evidence to the time [1]. The technique was used as AMR was to gradually increase the PEEP of 5 in 5 cm H₂O, and the maximum pressure in parallel, maintaining a constant pressure gradient of 15 cm H₂O. Each pressure rise during the we held for 10 respiratory cycles, with I: E ratio of 1: 2. Once recruited, we reduced pressures more progressively, 2 by 2 cm H₂O in pressure controlled mode, to see that we observed maximum compliance PEEP. Then we repeated the AMR and we established a PEEP 2 cm H₂O above PEEP from which the compliance began to worsen in the previous ARM. The recruitment maneuver was carried out in about 3 minutes.

During the AMR observed improvement in the distribution of VT up to a maximum of 25 cm H₂O PEEP and plateau pressure of 40 cm H₂O. EIT note with the VT distribution was more homogeneous, deriving 52% to the right lung and 37% to the left lung. We kept the I: E ratio of 1: 2 for the AMR, reaching VT of 550 ml and O₂ Sat 99%. The maximum compliance achieved was 37 ml / hPa to decrease PEEP cm H₂O below 8 during the expiratory phase of the AMR and this correlated with the image of the EIT in which percentage of ventilated left lung field is lost. We established as optimal PEEP 10 cm H₂O, 2 cm H₂O over the PEEP under which we look at the collapse with the EIT and the fall of the C_{dyn}. After the AMR, remained 10 cm H₂O PEEP, blood gases, with FiO₂ of 0.5%, I: E ratio of 1: 2, was 113 pO₂, pCO₂ 32. C_{dyn} was 60, with 25 cm H₂O of maximum pressure, obtaining a VT of 530 ml and 99% Sat O₂. VT distribution at this time was more homogeneous, with improved ventilation of the left lung which went from 21% to 37% of the VT. (Figure 2,3)

Discussion

Mechanical ventilation can cause damage or increase the lung damage may already exist and that concept has been called lung injury induced by mechanical ventilation (VILI) [2,3].

The VILI relates to the application of a PEEP level insufficient to prevent alveolar collapse and reopening cyclic (atelectrauma) causing increased alveolar inflammatory infiltrate [4], the use high alveolar pressures (barotrauma) and causing perivascular and alveolar edema

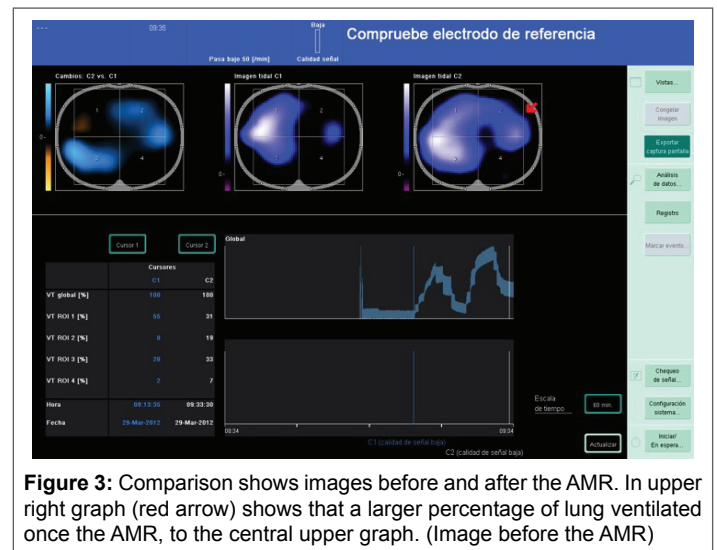


Figure 3: Comparison shows images before and after the ARM. In upper right graph (red arrow) shows that a larger percentage of lung ventilated once the ARM, to the central upper graph. (Image before the AMR)

[5]; and high respiratory rates, repetitive cycling [6]. Also the high tidal volume (volutrauma) seems able to induce cyclical alveolar distension [7].

Preventing alveolar over distension can be achieved using VT ≤ 6 ml/kg ideal weight and Pplat < 30 cm H₂O [8].

EIT is a technique that does not identify any such damages by inadequate mechanical ventilation. But it, lets see directly the effectiveness of the ARM, and therefore helps to establish what necessary for effective ARM and helps set the proper PEEP level, allowing a more homogeneous distribution of tidal volume pressures.

EIT has proven to be a technique that can monitor changes in lung volume during mechanical ventilation bedside [9].

In this case it identified the VT not distributed evenly throughout the lung fields, before making the ARM, and allowed to observe directly gain lung volume ventilated during ARM guiding the pressures of pulmonary open until they arrive during ARM.

EIT bedside could be an alternative to CT scans in evaluating the ventilation of lung regions [10].

Acknowledgements

Thanks to the doctors Maria Victoria Martinez, Jose Manuel Alvarez Avello y Pelayo de Merlo, for their assistance in this case report.

Conflict of Interest

The signatories authors qualify for authorship: Antonio RomeroBerrocal, Verónica Guilló, Ángel Blanco, Alberto Gutierrez, Javier García. Each of the authors declare the absence of financial interest or conflict of interest.

References

1. ART Investigators (2012) Rationale, study design, and analysis plan of the Alveolar Recruitment for ARDS Trial (ART): study protocol for a randomized controlled trial. *Trials* 13: 153.
2. Dreyfuss D, Saumon G (1998) Ventilator-induced lung injury: lessons from experimental studies. *Am J Respir Crit Care Med* 157: 294-323.
3. Ricard JD, Dreyfuss D, Saumon G (2002) Ventilator-induced lung injury. *Curr Opin Crit Care* 8: 12-20.
4. Goodman RB, Strieter RM, Martin DP, Steinberg KP, Milberg JA, et al. (1996) Inflammatory cytokines in patients with persistence of the acute respiratory distress syndrome. *Am J Respir Crit Care Med* 154: 602-611.

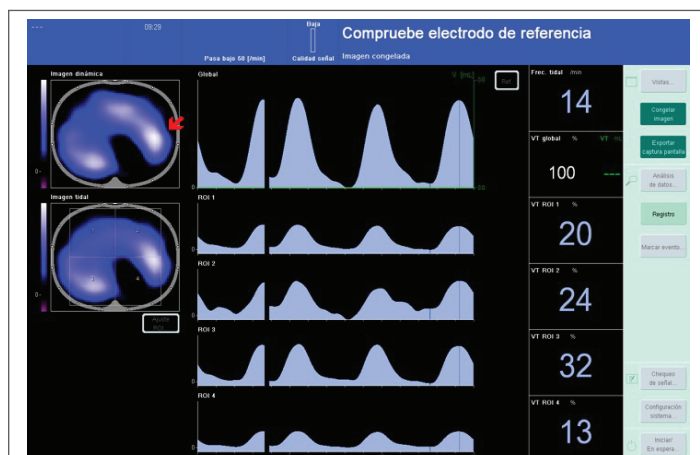


Figure 2: VT distribution after ARM was 52% in the right lung and 37% on the left, thereby improving 16% distribution VT in the left lung from the previous time the ARM. The red arrow indicates the area where VT percentage has been won.

5. Webb HH, Tierney DF (2003) Experimental pulmonary edema due to intermittent positive pressure ventilation with high inflation pressures. Protection by positive end-expiratory pressure. *Am Rev Respir Dis* 157: 556-565.
6. Hatchkiss JR, Blanch L, Murias G, Adams AB, Olson DA, et al. (2000) Effects of decreased respiratory frequency on ventilator-induced lung injury. *Am J Respir Crit Care Med* 161: 463-468.
7. Dreyfuss D, Soler P, Basset G, Saumon G (1988) High inflation pressure pulmonary edema. Respective effects of high airway pressure, high tidal volume, and positive end-expiratory pressure. *Am J Respir Crit Care Med* 137: 1159-1164.
8. Terragni PP, Rosboch G, Tealdi A, Corno E, Menaldo E, et al. (2007) Tidal hyper inflation during low tidal volume ventilation in acute respiratory distress syndrome. *Am J Respir Crit Care Med* 175: 160-166.
9. Hinz J, Hahn G, Neumann P, Sydow M, Mohrenweiser P, et al. (2003) End-expiratory lung impedance change enables bedside monitoring of end-expiratory lung volumen change. *Intensive Care Med* 29: 37-43.
10. Hinz J, Moerer O, Neumann P, Dudykevych T, Hellige G, et al. (2005) Effect of positive end-expiratory-pressure on regional ventilation in patients with acute lung injury evaluated by electrical impedance tomography. *European Journal of Anaesthesiology* 22: 817-825.